

*PREFACE*

# PERFECTED PRESENCE



Step into a world where every curve and line transcends the ordinary to unveil the unparalleled.

Introducing Preface – an automotive masterpiece meticulously crafted to embody perfection at every turn.

With an unwavering commitment to excellence, Preface emerges from a relentless pursuit of precision, where the fusion of design, technology, and power redefines the very essence of comfort and innovation.

From its engineering marvels to its aesthetic beauty, Preface stands as a testament to what it means to set new benchmarks in the segment. Driving it doesn't just set you on a path of discovery; it ensures you stand out as a beacon of distinction and elegance.

Perfection isn't just an aspiration for the Preface; it's the very foundation upon which it has been built, ensuring that your presence isn't just noticed, but remembered.



REDEFINING THE SEGMENT  
IN A BOLD NEW DIRECTION



# PIONEERING PERFECTION IN EVERY DIMENSION

## POWER

- Drive-E 2.0TD engine**  
Best and only one in its class  
(Ward's top 10 engines)
- 7-speed DCT transmission**  
World's top 10
- 215hp max. power**  
Strongest in its class
- 325Nm max. torque**  
Highest in its class
- 6.9s acceleration (0-100km/h)**  
Fastest in its class
- 98% transmission efficiency**  
Highest in its class

## SAFETY

- L2 ADAS intelligent driving assistance system**  
Class leading in its segment
- Front 2/rear 4 parking radars**  
Largest number in its class
- 72.98% proportion of high strength steel**  
Highest in its class
- 35.9m/100 km braking range**  
Shortest in its class
- 540° panoramic image and transparent chassis**  
Unique in its class
- CN95 cabin air filter**  
Unique in its class

## COMFORT

- 4825mm car body**  
Biggest in its class
- 2800mm wheelbase**  
Longest in its class
- 1880mm width**  
Widest in its class
- 70mm rear floor height**  
Lowest in its class
- 948mm rear head space**  
Largest in its class
- 1132mm trunk depth**  
Industry-leading in its segment

## TECHNOLOGY

- Qualcomm Snapdragon 8155 chip**  
Best in its class
- 13.2" HD infotainment screen**  
Biggest in its class
- 4 USB ports (Type-C×3/-A×1)**  
Largest number in its class
- Harman™ Infinity deluxe headrest audio system**  
Unique in its class
- 10.2" LCD instrument cluster**  
Cleanest in its class



COMMAND THE ROAD WITH  
**UNPARALLELED STABILITY AND SPACE**

Largest car size, widest car body, longest wheelbase

**PERFORMANCE MEETS SOPHISTICATION**

Crafted for those who seek the extraordinary, every element of this car is a testament to the relentless pursuit of perfection, where every detail is curated with precision and passion.

From its heart-pounding performance to its breathtaking aesthetics, Preface is designed not just to meet but to exceed the desires of the discerning driver.



**A visage of bold sophistication**  
A majestic bold grille with exquisite details



**Masterpiece of aerodynamic engineering**  
Biggest-in-class 1618mm front and rear tread



**Merging safety with elegance**  
Class-leading full LED run-through taillight



**Enhanced performance with distinctive aesthetic**  
Quad exhaust pipes

## FLAWLESS AND EXQUISITE INTERIORS

Step inside Preface and discover an interior that speaks volumes of sophistication and meticulous craftsmanship.

Every touchpoint within its cabin has been perfected to a tee, blending comfort with functionality in a space designed to transcend expectations.



**Immerse yourself in an oasis of luxury**  
Biggest-in-class 4825mm car body



**Engage with clarity**  
13.2" largest-in-class 2K high-res infotainment display



**Effortless ignition and modern practicality**  
Column shifter



**Experience the symphony of the road**  
Harman™ infinity deluxe headrest audio system



**Unparalleled adjustment and support**  
6-way power driver seat with 4 way lumbar support



**Convenience within reach**  
Power windows



**Bask in the expanse of the sky**  
Class-leading 0.5m<sup>2</sup> panoramic sunroof



**Functionality at your fingertips**  
Convenient and intuitive user interface



**Breathe in purity**  
CN95 cabin air filter



**Comfort in every climate**  
Front row ventilation

## ENGINEERING EXCELLENCE PERFECTED

Venture beneath the surface of Preface to uncover the heart and frame that propel this marvel of automotive engineering.

Built with a visionary approach to performance and durability, every aspect of its chassis and engine is a testament to the ethos of perfected presence, redefining the segment with groundbreaking innovation.



### Feel the pulse of the road with power

- Drive-E 2.0TD engine (Ward's top 10 engines) + 7-speed DCT transmission
- Strongest engine in its class (215hp max. power)
- Fastest in its class (0-100 km/h in 6.9s)
- Highest-in-class 325Nm max. torque



### World-class Compact Modular Architecture (CMA) platform

- Four genes: safety, performance, quality and intelligence
- Class-leading torsional rigidity of 29,000 Nm/deg
- Shortest braking distance in its class at (35.9m for a speed of 100km/h)
- Epitome of handling and driving manipulation



### Built with the resilience to protect

Highest-in-class proportion of high strength steel - 72.98%



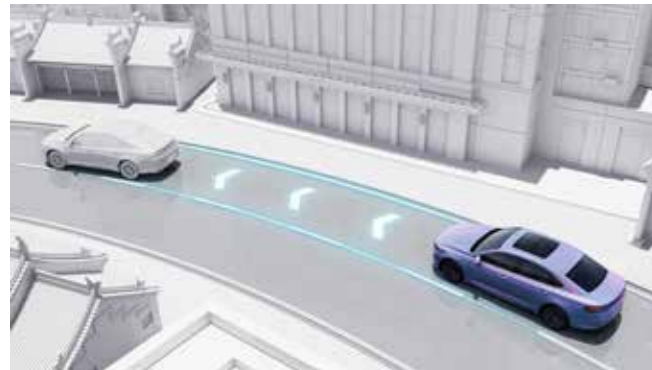
## CRAFTING PERFECTION IN SAFETY AND INNOVATION

In an era where technology and safety converge to redefine the driving experience, we introduce perfected advancements that not only enhance the journey but also ensure unparalleled protection for every passenger.

Preface is equipped with cutting-edge features that blend seamlessly with its luxurious design, embodying a cocoon of safety without compromising on performance.

### Intuitive assistance to elevate your drive

Class-leading L2 ADAS Intelligent Driver Assistance System



Full speed adaptive cruise



540° transparent chassis



Automatic emergency braking

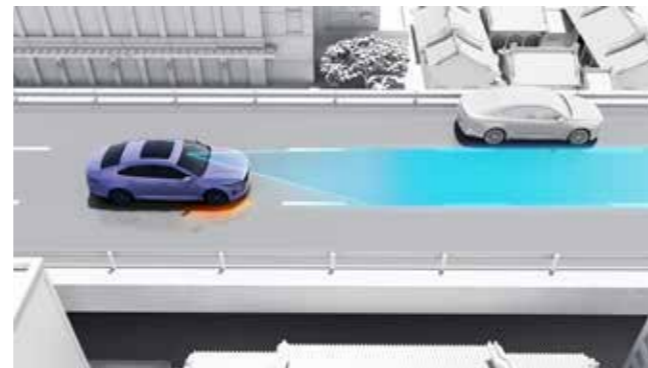
### Navigate with confidence



Largest number-in-class front 2/rear 4 parking radars



Lane departure warning



Lane keeping assist







## METICULOUS CRAFTSMANSHIP

Dive into the heart of Preface, where every detail harmonises to create an environment that is as visually stunning as it is comfortable.

The fusion of exquisite interiors, thoughtful colour selection, and unparalleled dimensions of creates a vehicle that doesn't just occupy space but commands it, making every journey a testament to the relentless pursuit of perfection.

## BODY COLOURS



Night Black



Ebony Green



Platinum White



Cadet Grey



Gunmetal Grey



Davy's Purple

## DIMENSIONS

Five largest parameters in its class  
Length. Width. Wheelbase. Tread. Aspect Ratio.



Height:  
1469 MM



Width: 1880 MM  
Tread: 1618 MM



Wheelbase: 2800 MM

Length: 4825 MM



Elegant camel brown coloured interiors  
Perforated PVC leather seating surface



| SPECIFICATIONS   | GL                             | GF |
|--|--------------------------------|----|
| <b>DIMENSIONS</b>  |                                |    |
| Length x Width x Height (mm)   | 4,825 x 1,880 x 1,469          |    |
| Wheelbase (mm)   | 2800                           |    |
| <b>MECHANICAL</b>  |                                |    |
| Engine Type  | 2.0L Turbo Charged, 4-Cylinder |    |
| Transmission Type  | 7DCT                           |    |
| Max. Power (kW/rpm)  | 160/5,500                      |    |
| Max. Torque (N•m/rpm)  | 325/1,800-4,500                |    |
| 0-100 km/h Acceleration Time (s)   | 6.9                            |    |
| Fuel Tank Capacity (L)   | 50                             |    |
| <b>EXTERIOR</b>  |                                |    |
| Automatic On/Off LED Headlights with Follow-me Home Lighting                           | ●                              | ●  |
| ALL Solar-absorbing Windows  | ●                              | ●  |
| Panoramic Power Sunroof with Power Sunshade  | ●                              | ●  |
| Exterior Power-folding Mirrors   | –                              | ●  |
| Hands-free Trunk Liftgate Open   | ●                              | ●  |
| Red-Painted Braking Calipers   | –                              | ●  |
| Dual Exhaust Pipes on Two Sides  | ●                              | ●  |
| 225/45 R18 All-season Tires  | –                              | ●  |
| <b>INTERIOR</b>  |                                |    |
| Perforated PVC Leather Seating Surface   | ●                              | ●  |
| 6-way Power Adjustable Driver Seat   | ●                              | ●  |
| Driver Seat with 4-way Power Adjustable Lumbar Control                                 | –                              | ●  |
| 4-way Power Front-passenger Seat   | –                              | ●  |
| Ventilated Front Seats   | –                              | ●  |
| <b>SAFETY</b>  |                                |    |
| ABS+EBD+BA+TCS+HAC   | ●                              | ●  |
| Frontal Airbags for Driver and Front Passenger   | ●                              | ●  |
| Seat-mounted Side Airbags for Driver and Front Passenger                               | ●                              | ●  |
| Curtain Airbags  | –                              | ●  |
| Rear Parking Sensors   | ●                              | ●  |
| Front Parking Sensors  | ●                              | ●  |
| Topview Surround Vision with Transparent Chassis Monitoring                            | ●                              | ●  |
| <b>L2 Auto Driver Assistant System</b>   |                                |    |
| Full Speed Range Adaptive Cruise Control (FSRA)  | –                              | ●  |
| Automatic Emergency Braking (AEB)  | –                              | ●  |
| Lane Departure Warning (LDW)   | –                              | ●  |
| Lane Keeping Assist (LKA)  | –                              | ●  |
| Emergency Lane Keeping Assist (ELKA)   | –                              | ●  |
| Highway Assist (HWA)   | –                              | ●  |
| Intelligent High Beam Control (IHBC)   | –                              | ●  |
| <b>INFOTAINMENT</b>  |                                |    |
| 10.2" Instrument Cluster-LCD Display   | ●                              | ●  |
| 8-speaker Audio System   | ●                              | –  |
| <b>HARMAN™</b> Infinity 12-Speaker Luxury Audio System (including 2 Headrest Speakers) | –                              | ●  |
| 13.2" HD Touch-screen Display  | ●                              | ●  |
| <b>Qualcomm™</b> Snapdragon 8155 Chip  | ●                              | ●  |

● Standard    – Not Available



GEELY  
17121222  
Visit [Geely.bh](http://Geely.bh)